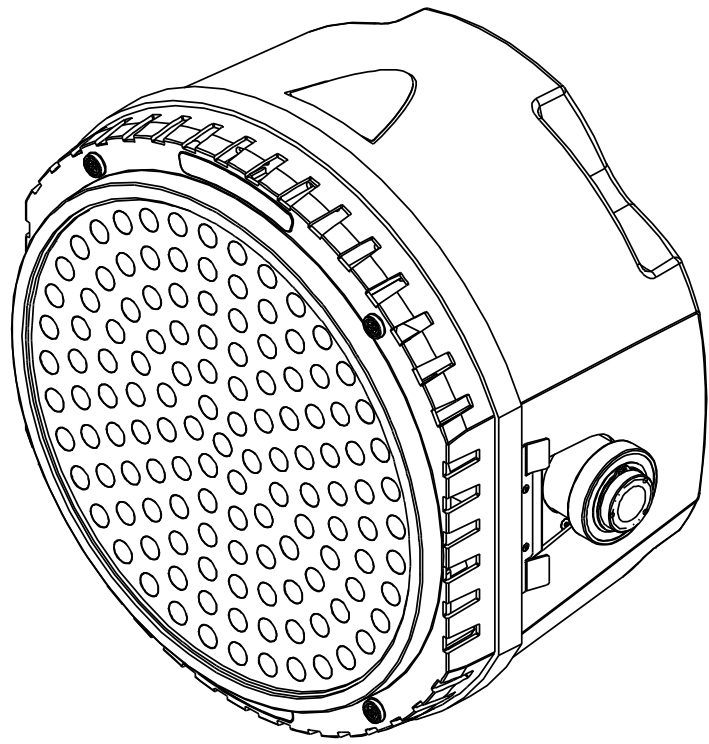


TZA011

REV.	DESCRIPTION	DATE	ENG	ECO #	APPR
1	CREATE DRAWING	04APR08	PP		MB
2	UPDATE REVISION FOR TZA004 & TZA006	01MAY08	PP		MB
3	UPDATE REVISION FOR TZA006	06MAY08	PP		MB



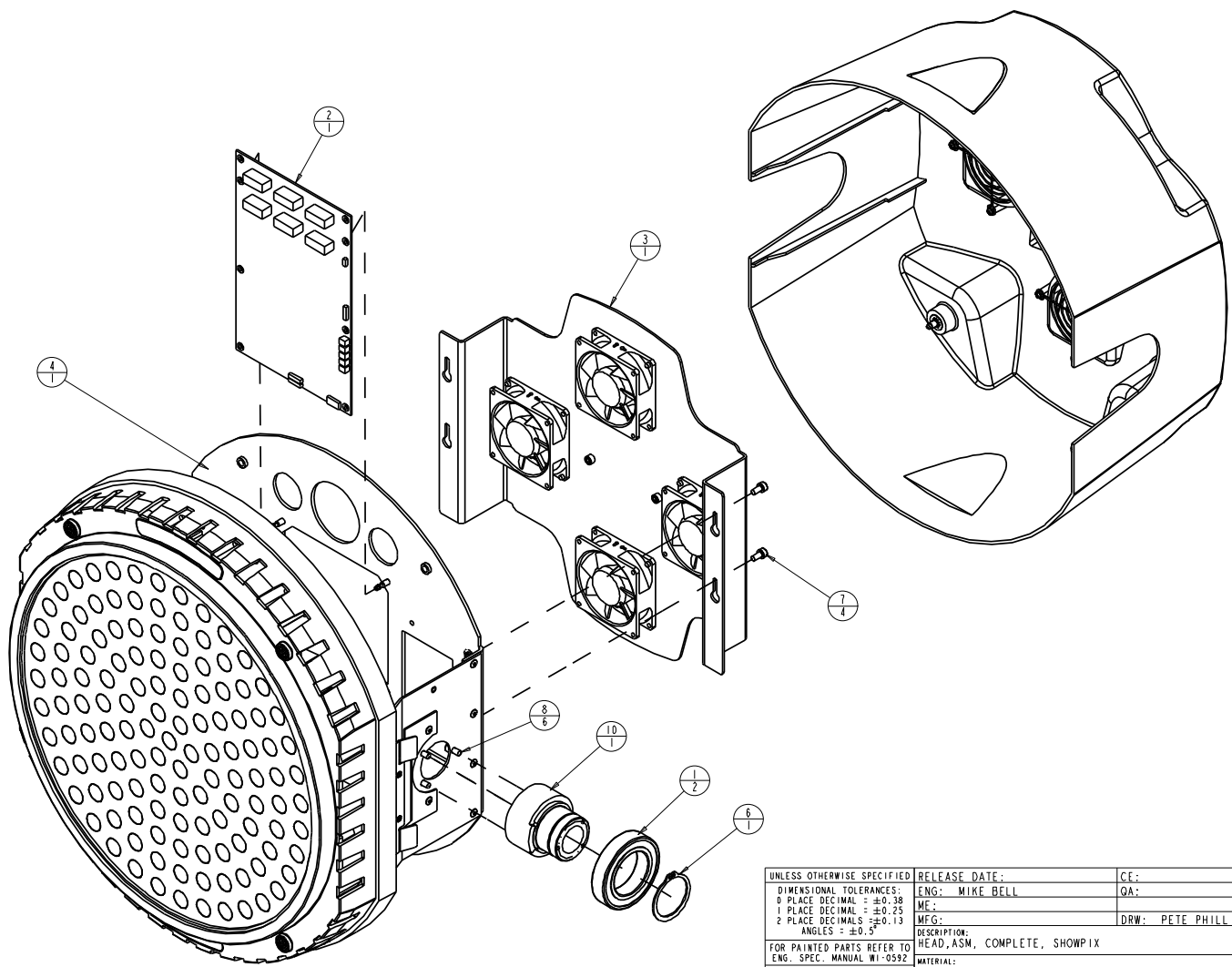
10	1	TW381	99140021	-	TUBE, TILT W/ RETAINING GROOVE
9	1	CAT327	99140018	A	TUBE, TILT CATALYST HEAD, DLI
8	6	SCREWM5AC10SSP	91100510	.	SCREW,M5 SOCKET CAP 10 SS W/PATCH
7	4	SCREWM5AC10W-BZ	91000510	.	SCREW,M5 SOCKET CAP 10 BZ SEMS
6	1	RING_RETAINING_175_SHAFT	90701375	.	RING,RETAINING, EXTERNAL, 1.618
5	1	TZA033	TBD	3	REAR BEZEL ASSEMBLY
4	1	TZA004	80450096	A	HEAD, ASM, SHOWPIX
3	1	TZA006	TBD	5	FAN BULKHEAD ASSEMBLY
2	1	TZ431	80010213EF	3	BOARD, CPU RGB LED LOGIC ASSEMBLY
1	2	BEARING_45-75MM-BALL	90719061	.	BEARING,45MM,6009 2RS
ITEM NO.	QTY.	FILENAME	PART NO.	REV	DESCRIPTION

BILL OF MATERIALS


PROPRIETARY NOTICE:
 THIS DOCUMENT CONTAINS CONFIDENTIAL AND PROPRIETARY INFORMATION OF HIGH END SYSTEMS INC., (ALSO DBA LIGHTWAVE RESEARCH) AND IS GIVEN TO THE RECEIVER IN CONFIDENCE. THE RECEIVER ACCEPTS AND AGREES THAT, EXCEPT AS AUTHORIZED BY HIGH END SYSTEMS, THE RECEIVER WILL NOT PERMIT THE USE OF THE DOCUMENT OR ANY COPY THEREOF OR THE INFORMATION THEREIN, WILL NOT COPY OR PERMIT COPYING THE DOCUMENT OR DISCLOSE TO OTHERS EITHER THE DOCUMENT OR THE INFORMATION THEREIN, AND WILL UPON COMPLETION OF THE NEED TO RETURN THE DOCUMENT, OR UPON DEMAND, RETURN THE DOCUMENT WITHOUT RETAINING ANY OF THE INFORMATION CONTAINED THEREIN IN ANY FORM WHATSOEVER.

UNLESS OTHERWISE SPECIFIED DIMENSIONAL TOLERANCES: 0 PLACE DECIMAL = ±0.38 1 PLACE DECIMAL = ±0.25 2 PLACE DECIMALS = ±0.13 ANGLES = ±0.5°	RELEASE DATE: ENG: MIKE BELL ME: MEG:	CE: QA: DRW: PETE PHILLIPS	High End 2105 GRACY FARMS LANE AUSTIN, TEXAS 78158 (512) 836-2242 FAX (512) 832-4128 ***** http://www.highend.com	
FOR PAINTED PARTS REFER TO ENG. SPEC. MANUAL WI-0592	DESCRIPTION: HEAD,ASM, COMPLETE, SHOWPIX	MATERIAL: CHARTED	FINISH:	
ALL COMPONENTS, MATERIALS AND FINISHES TO BE RoHS COMPLIANT	MIN. DRAFT	MIN. RADII	MIN. FLATNESS	MIN. THICKNESS
	INTERPRET DIMENSIONS PER ASME Y14.5M-1994 THIRD ANGLE PROJECTION		SI METRIC A1	PART NO. INTERNAL TZA011
	DIMENSIONS ARE IN MILLIMETERS		DO NOT SCALE	SCALE: 0.200
				SHEET: 1 OF 3

TZA011

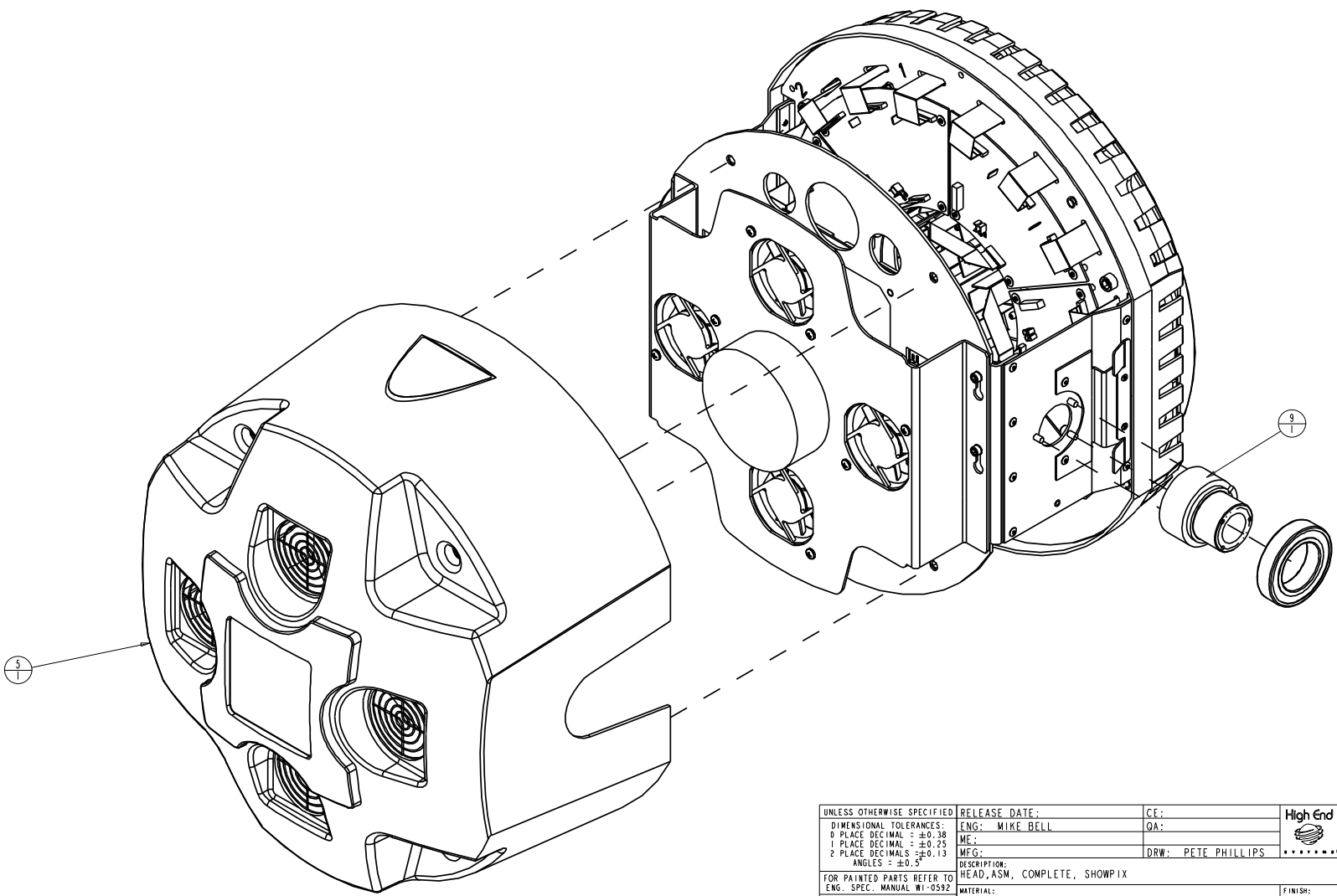


PROPRIETARY NOTICE:
 THIS DOCUMENT CONTAINS CONFIDENTIAL AND PROPRIETARY INFORMATION OF HIGH END SYSTEMS INC., (ALSO DBA LIGHTWAVE RESEARCH) AND IS GIVEN TO THE RECEIVER IN CONFIDENCE. THE RECEIVER ACCEPTS AND AGREES THAT, EXCEPT AS AUTHORIZED BY HIGH END SYSTEMS, THE RECEIVER WILL NOT PERMIT THE USE OF THE DOCUMENT OR ANY COPY THEREOF OR THE INFORMATION THEREIN, WILL NOT COPY OR PERMIT COPYING THE DOCUMENT WILL NOT DISCLOSE TO OTHERS EITHER THE DOCUMENT OR THE INFORMATION THEREIN, AND WILL UPON COMPLETION OF THE NEED TO RETURN THE DOCUMENT, OR UPON DEMAND, RETURN THE DOCUMENT WITHOUT RETAINING ANY OF THE INFORMATION CONTAINED THEREIN IN ANY FORM WHATSOEVER.

UNLESS OTHERWISE SPECIFIED	RELEASE DATE:	CE:	High End 2105 GRACY FARMS LANE AUSTIN, TEXAS 78158 (512) 836-2242 FAX (512) 832-4128 ***** http://www.highend.com	
DIMENSIONAL TOLERANCES: 0 PLACE DECIMAL = ±0.38 1 PLACE DECIMAL = ±0.25 2 PLACE DECIMALS = ±0.13 ANGLES = ±0.5°	ENG: MIKE BELL	QA:		
FOR PAINTED PARTS REFER TO ENG. SPEC. MANUAL WI-0592	ME:	DRW: PETE PHILLIPS	DESCRIPTION: HEAD, ASM. COMPLETE, SHOW P IX	
ALL COMPONENTS, MATERIALS AND FINISHES TO BE RoHS COMPLIANT	MATERIAL:	FINISH:		
MIN. DRAFT	INTERPRET DIMENSIONS PER ASME Y14.5M-1994	SI METRIC A1	PART NO. INTERNAL TZA011	DRAWING NO. 3
MIN. RADIUS	THIRD ANGLE PROJECTION	DO NOT SCALE		SCALE: 0.200
FLATNESS	DIMENSIONS ARE IN MILLIMETERS	SHEET: 2 OF 3		
FINISHES				
VOLUME				

24 23 22 21 20 19 18 17 16 15 14 13 12 11 10 9 8 7 6 5 4 3 2 1

TZA011



PROPRIETARY NOTICE:
 THIS DOCUMENT CONTAINS CONFIDENTIAL AND PROPRIETARY INFORMATION OF HIGH END SYSTEMS INC., (ALSO DBA LIGHTWAVE RESEARCH) AND IS GIVEN TO THE RECEIVER IN CONFIDENCE. THE RECEIVER ACCEPTS AND AGREES THAT, EXCEPT AS AUTHORIZED BY HIGH END SYSTEMS, THE RECEIVER WILL NOT PERMIT THE USE OF THE DOCUMENT OR ANY COPY THEREOF OR THE INFORMATION THEREIN, WILL NOT COPY OR PERMIT COPYING THE DOCUMENT WILL NOT DISCLOSE TO OTHERS EITHER THE DOCUMENT OR THE INFORMATION THEREIN, AND WILL UPON COMPLETION OF THE NEED TO RETURN THE DOCUMENT, OR UPON DEMAND, RETURN THE DOCUMENT WITHOUT RETAINING ANY OF THE INFORMATION CONTAINED THEREIN IN ANY FORM WHATSOEVER.

UNLESS OTHERWISE SPECIFIED		RELEASE DATE:	CE:	High End 2105 GRACY FARMS LANE AUSTIN, TEXAS 78158 (512) 836-2242 FAX (512) 832-4128 ***** http://www.highend.com	Lightwave RESEARCH
DIMENSIONAL TOLERANCES: 0 PLACE DECIMAL = ±0.38 1 PLACE DECIMAL = ±0.25 2 PLACE DECIMALS = ±0.13 ANGLES = ±0.5°		ENG: MIKE BELL	QA:		
FOR PAINTED PARTS REFER TO ENG. SPEC. MANUAL WI-0592		MATERIAL:	DESCRIPTION:		
ALL COMPONENTS, MATERIALS AND FINISHES TO BE RoHS COMPLIANT		CHARTED	HEAD, ASM, COMPLETE, SHOW P IX		
MIN. DRAFT		INTERPRET DIMENSIONS PER ASME Y14.5M-1994	SI METRIC A1	PART NO. INTERNAL TZA011	DRAWING NO. TZA011
MIN. RADIUS		THIRD ANGLE PROJECTION		DO NOT SCALE	SCALE: 0.200
FLATNESS		DIMENSIONS ARE IN MILLIMETERS			SHEET: 3 OF 3
THICKNESS					REV. 3
VOLUME					